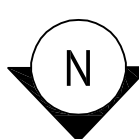


STRIPING LEGEND

PARKING LOT STRIPING:
SURFACES SHOULD BE CLEAN & DRY.
TOP COAT SHERWIN WILLIAMS - PRO
MAR TRAFFIC PAINT YELLOW TMS495

HANDICAP STRIPING:
SURFACES SHOULD BE CLEAN & DRY.
TOP COAT SHERWIN WILLIAMS - PRO
MAR TRAFFIC PAINT "H.C." BLUE

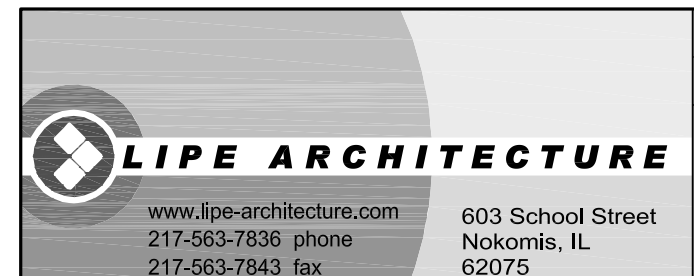
1 FLOOR / SITE PLAN
A1 SCALE: 3/16" = 1'-0"



ALL NEW PLUMBING WORK AND CONTRACTOR TO FIELD VERIFY EXISTING UNDERGROUND PLUMBING MEETS OR EXCEEDS REQUIREMENTS OF:

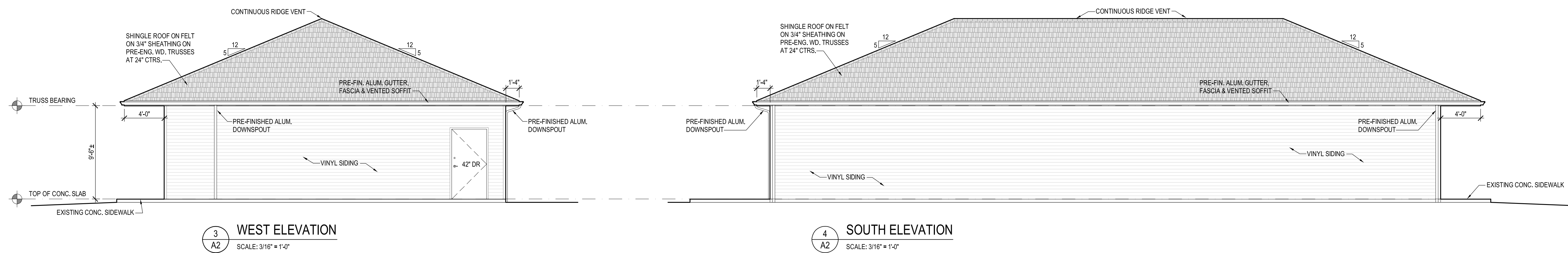
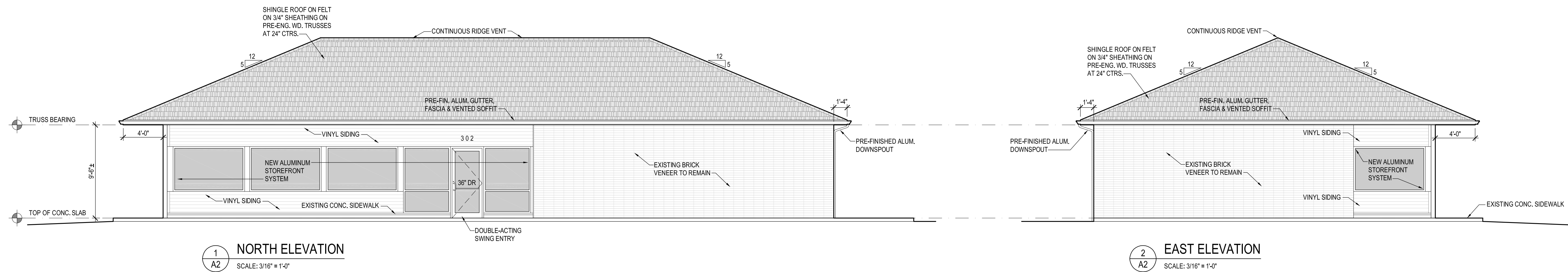
TITLE 77-PUBLIC HEALTH
CHAPTER I-DEPARTMENT OF PUBLIC HEALTH
SUBCHAPTER 1-WATER AND SEWAGE
PART 890 ILLINOIS PLUMBING CODE

GENERAL NOTES:
FINAL ELECTRICAL POWER & LIGHTING DESIGN TO BE DETERMINED BY ELECTRICAL CONTRACTOR
FINAL HEATING & COOLING SYSTEM DESIGN TO BE DETERMINED BY HVAC CONTRACTOR
FINAL PLUMBING SYSTEM DESIGN TO BE DETERMINED BY PLUMBING CONTRACTOR



NOTE: CONTRACTOR SHALL OBTAIN AND VERIFY ALL DIMENSIONS AND CONDITIONS AT JOB SITE AND BE FULLY RESPONSIBLE FOR SAME.

FLOOR / SITE PLAN	PROJ. NO.: 1108
Sullivan Pharmacy - Building Renovation	DATE: 01-18-12
302 E. Union Ave., Litchfield, IL 62056	A1



GENERAL NOTES

FRAMING LUMBER

- Load Bearing 2x6 studs shall be #1 SYP or equal with the following design values: Fb = 1850 psi, Fc = 1850 psi, E = 1,700,000 psi

NAILING PATTERN OF ROOF DECK AND EXTERIOR STUD WALLS

- Nail 3/4" roof deck sheathing w/ 10d nails @ 6" o.c. at all panel edges. Nail intermediate framing w/ 10d nails @ 12" o.c. Use plywood clips on panel edges.
- Nail 1/2" wall sheathing w/ 8d nails @ 6" o.c. at all panel edges. Block panel edges with 2" wide blocking and nail to studs. Nail at intermediate studs with 8d nails @ 12" o.c.

DESIGN LOADS

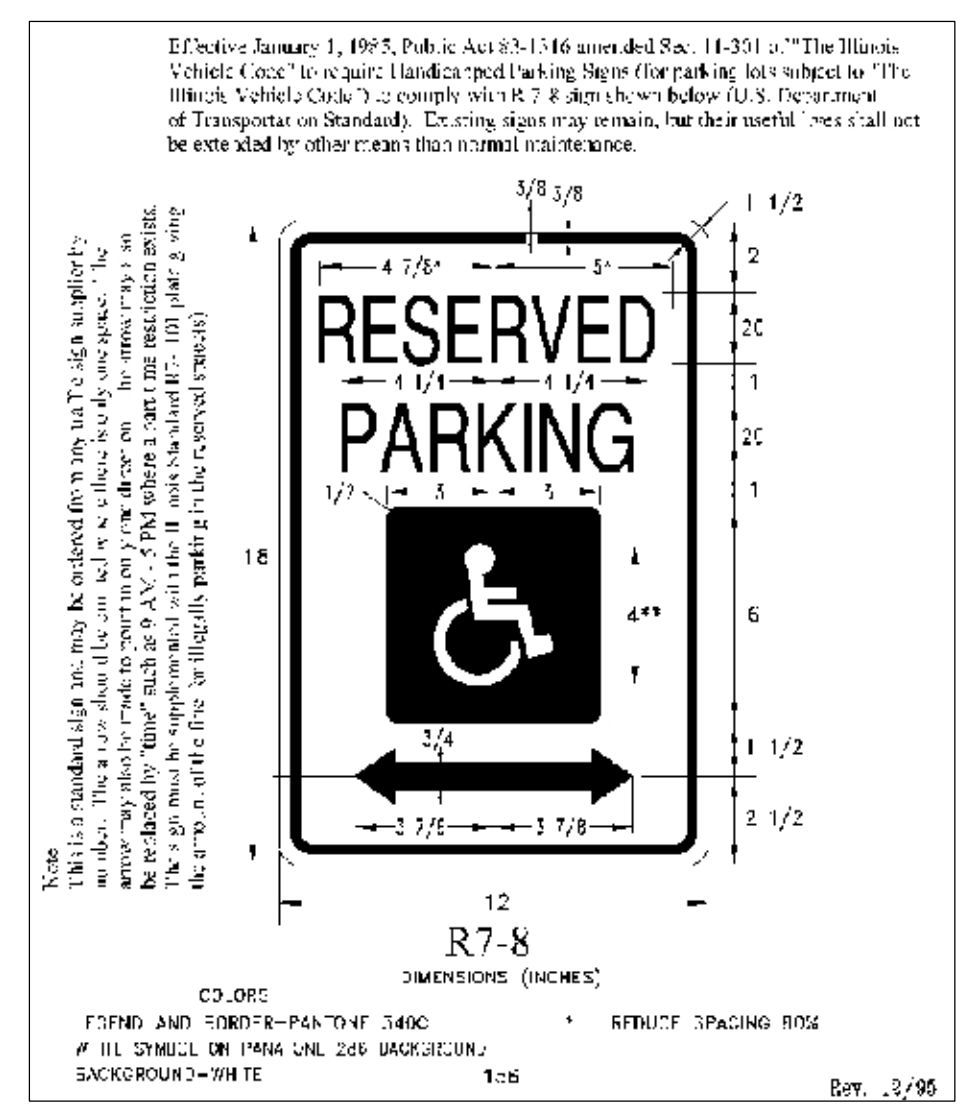
- The building is designed in accordance with the 2006 International Building Code.
- Design loads are as follows:
 Roof: DL - 20 psf, LL 30 psf, (plus drifting snow loads)
 Wind: 90 mph velocity, Exposure C, I = 1.0, Per 2006 IBC
 Seismic: Ss = .25, S1 = .12, Seismic Use Group I, Ie = 1.0, Site Class D, Sds = 0.267, Sd1 = 0.185, Seismic Design Category C, Lateral Force Resisting System: Plywood Shear Walls

APPLICABLE CODES:

- INTERNATIONAL BUILDING CODE - 2006
 - NATIONAL ELECTRIC CODE - CURRENT EDITION
 - IL PLUMBING CODE - CURRENT EDITION
 - INTERNATIONAL MECHANICAL CODE - 2006
 - NFPA LIFE SAFETY 101
 - IL ACCESSIBILITY CODE - CURRENT EDITION
 - LITCHFIELD, IL - CODE OF ORDINANCES
- ZONING = C-2 GENERAL COMMERCIAL
- BUILDING DATA:**
- USE & OCCUPANCY CLASSIFICATION: MERCANTILE GROUP M - IBC 2006
- TOTAL GSF
2,292 GSF
- PARKING REQUIRED: 1 SPACE / 250 SF = 10 SPACES (INDICATED)
 H.C. PARKING REQUIRED: 1 REQUIRED (1 PROVIDED)

FUNCTION	AREA - SF	SF / OCCUPANT	OCCUPANT LOAD
BUSINESS AREA	984 SF	100 GROSS	10 OCCUPANTS
MERCANTILE AREA	1,028 SF	30 GROSS	35 OCCUPANTS
STORAGE AREA	280 SF	300 GROSS	1 OCCUPANT
TOTAL OCCUPANT LOAD =			46 OCCUPANTS

IBC TABLE 1004.1.1 OCCUPANT LOAD:	IBC TABLE 1005.1 EGRESS WIDTH WITHOUT SPRINKLER SYSTEM = 0.2 IN. OCCUPANT
46 OCCUPANTS x 0.2 IN. = 9.2 IN. REQUIRED (78 IN. PROVIDED)	46 OCCUPANTS x 0.2 IN. = 9.2 IN. REQUIRED (78 IN. PROVIDED)
IBC TABLE 1016.1 EXIT ACCESS TRAVEL DISTANCE WITHOUT SPRINKLER SYSTEM	200 FT. MAX. - (APPROXIMATELY 45 FT. MAX. PROVIDED)



5 HANDICAP PARKING SIGN
 NO SCALE

MOUNT HANDICAP PARKING SIGN TO AN 1 1/2" DIA. GALVANIZED STEEL POST AT 8'-0" ABOVE GRADE TO BOTTOM OF SIGN. GALV. STL. POST TO BE EMBEDDED IN 12" DIA. x 24" DEEP CONC. FOOTING



LIPE ARCHITECTURE

www.lipe-architecture.com
 217-563-7836 phone
 217-563-7843 fax

603 School Street
 Nokomis, IL
 62075

NOTE: CONTRACTOR SHALL OBTAIN AND VERIFY ALL DIMENSIONS AND CONDITIONS AT JOB SITE AND BE FULLY RESPONSIBLE FOR SAME.

EXTERIOR ELEVATIONS	PROJ. NO.: 1108
Sullivan Pharmacy - Building Renovation	DATE: 01-18-12
302 E. Union Ave., Litchfield, IL 62056	A2